

2026 CATALOGUE



 **FONDMETAL**
LIGHT ALLOY WHEELS SINCE 1972

 **MADE IN ITALY**

“ We really love our work.
We only think about our work and this alone.
Thus even when it seems that we have reached the top,
we are never satisfied as we are convinced that there is
always room for improvement, be it some small detail,
perhaps insignificant for others, but not for us.”

MR.
GABRIELE RUMI





FONDMETAL
LIGHT ALLOY WHEELS SINCE 1972



BACK IN
FORMULA 1



After 26 years, we return to a world we've always known.
Not as a comeback, but as the natural continuation of a journey shaped by time, experience and discipline.

Motorsport has never been a closed chapter.
It has always influenced the way we think, the way we work, and the standards we set for ourselves.

What we've learned there becomes part of everything we do.
It's written in our DNA.



Dopo 26 anni, torniamo in un mondo che abbiamo sempre conosciuto.
Non come un ritorno, ma come la naturale continuazione di un percorso plasmato dal tempo, dall'esperienza e dalla disciplina.

Il motorsport non è mai stato un capitolo chiuso.
Ha sempre influenzato il nostro modo di pensare, il nostro modo di lavorare e gli standard che ci poniamo.

Ciò che abbiamo imparato lì diventa parte di tutto ciò che facciamo.
È scritto nel nostro DNA.

1984



1992



1992



2000



2026



 **SUPERTUNING**
/ PAG 12



STC-23
/ PAG 14

STC-45
/ PAG 16

STC-10
/ PAG 18

Style your
wheels in **3D**



 **SPERFORMANCE**
/ PAG 20



1972
/ PAG 22

9RR
/ PAG 24

9EVO
/ PAG 26

9ESSE
/ PAG 28

 **INSPIRED**
/ PAG 30



VOLCAN
/ PAG 32

ZEPHYRUS
/ PAG 34

TARANIS
/ PAG 35

TAARA
/ PAG 36

ZELOS
/ PAG 37

IUPITER
/ PAG 38

KARI
/ PAG 39

ELATHA
/ PAG 40

E-JOULE
/ PAG 41



CRATOS
/ PAG 42

THOE
/ PAG 43

ISTAR
/ PAG 44

MOROS
/ PAG 45

ATENA
/ PAG 46

KOROS
/ PAG 47

MAKHAI
/ PAG 48

AIDON
/ PAG 49

IOKE
/ PAG 50

ALKE
/ PAG 51

HEXIS
/ PAG 52



OFF-ROAD
/ PAG 54



BLUSTER
/ PAG 56

FONDMETAL COLLECTION 2026



CLASSIC
/ PAG 58



HFT5
/ PAG 60

LMZ01
/ PAG 60

PAG15
/ PAG 61

PAG16
/ PAG 61

PAG17
/ PAG 61

STR16
/ PAG 62

NOS16
/ PAG 62

RSR16
/ PAG 63

TT01
/ PAG 63



PROFESSIONAL
/ PAG 64



PRO1
/ PAG 66

PRO2
/ PAG 68



SHOP
/ PAG 70



**MERCHANDISING
CLOTHING**

MADE IN ITALY



Low pressure Casting



Gravity Casting



Machining



Painting

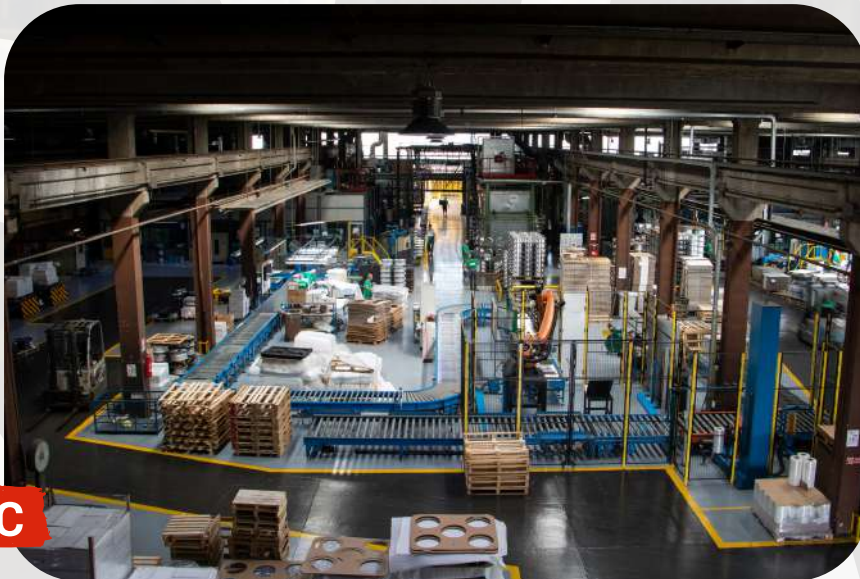
SINCE 1972



Diamond Cutting



Packaging



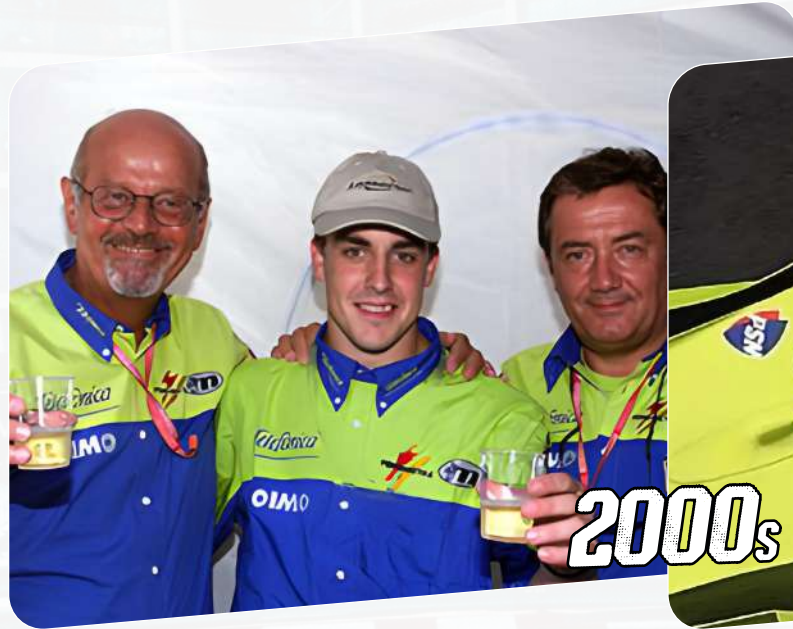
Logistic



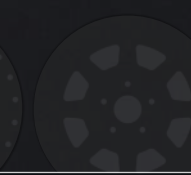
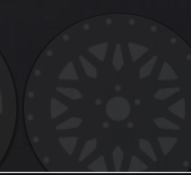
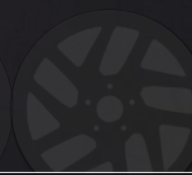
Quality



FONDMETAL







SUPERTUNING COLLECTION



Premium sizes characterized by a concave style and prestigious finishes, they stand out for the differentiated design between the front and the rear.

STC wheels have a strong and aggressive style and are synonymous with dynamism.



Misure premium caratterizzate dallo stile concavo e da finiture di prestigio, si distinguono per il design differenziato tra l'anteriore e il posteriore.

Le ruote STC hanno uno stile forte e aggressivo e sono sinonimo di dinamicità.



Die Premium-Masse, die durch ihren konkaven Stil und edler Oberfläche überzeugt sind, zeichnet sich durch ein differenziertes Design zwischen der Vorder- und Rückseite aus.

STC-Räder haben einen starken und aggressiven Stil und sind ein Synonym für Dynamik.



Supertuning

STC-23

The **23" inches** wheel for your Urus.





Style your wheels in **30**



SIZES

10.0 / 11.5 x 23"



Winter Approved



Glossy Black



Glossy Black Machined



Glossy Black Gold Machined



Supertuning

STC-45

The **20" inches** wheel for your Mustang.

Front

Rear

**STAGGERED
DESIGN!**





Style your wheels in **30**



SIZES

9.0 / 10.5 x 20"



Winter Approved



Matt Black



Glossy Black Machined



Supertuning

STC-10

The **22" inches** wheel for your Camaro.

Front

Rear

**STAGGERED
DESIGN!**





Style your wheels in **30**



SIZES

9.0 / 11.0 x 22"



Winter Approved



Matt Black





9PERFORMANCE COLLECTION



Reducing the mass of the wheel does not only mean reducing the total mass of the vehicle: above all it means reducing the unsprung mass.

Reducing the weight of the unsprung mass ensures better grip of the tires on the road surface.



Ridurre la massa della ruota non significa soltanto ridurre la massa totale del veicolo: significa soprattutto ridurre la massa non sospesa.

La riduzione del peso della massa non sospesa assicura una migliore aderenza degli pneumatici sulla superficie stradale.



Um die Radmasse eines Fahrzeugs zu verringern, reicht es nicht aus die Gesamtmasse zu verkleinern. Man muss vor allem die ungefederte Masse minimieren.

Die Gewichtsreduzierung der ungefederten Masse, garantiert dann eine bessere Ruhereibung des Reifens auf der Straßenoberfläche.

9Performance



Style your wheels in **30**

1972

The **50th anniversary** special wheel.



9PERFORMANCE COLLECTION



SIZES

	8.5	x	19"
9.0 / 10.5		x	20"
9.0 / 11.0		x	21"



Winter Approved



Glossy Black

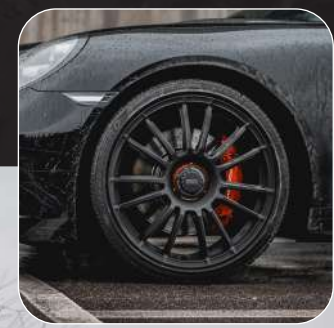


Glossy Black Machined



Glossy Black Bronze Machined

9Performance



9RRR



Style your wheels in **30**

Lightness and strenght in a **timeless design.**



9PERFORMANCE COLLECTION



SIZES

- 7.0 / 7.5 x 17"
- 7.0 / 7.5 / 8.0 x 18"
- 8.5 / 9.5 / 11.0 x 19"
- 8.5 / 11.0 x 20"



Winter Approved



Glossy Black



Glossy Gold



Matt Black



Monodado (20")

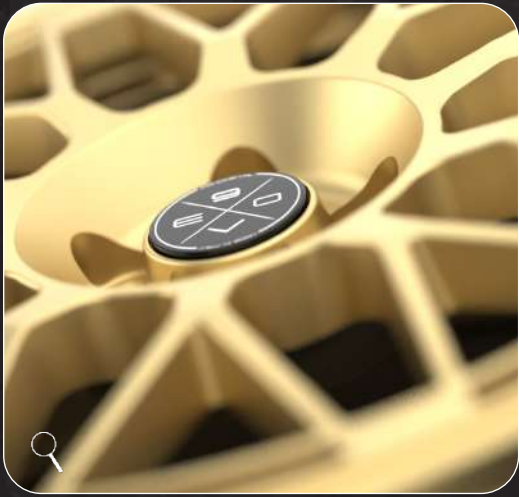
9Performance



Style your wheels in **3D**

9EVO

A **mesh type** design for the gentleman driver.



9PERFORMANCE COLLECTION



SIZES

7.0	x	17"
7.0 / 8.0	x	18"
8.0	x	19"



Winter Approved



9Performance



9ESSE



Style your wheels in **30**

A special wheel for **500 Abarth** drivers.



9 PERFORMANCE COLLECTION

SIZES

7.0 x 17"

 **Winter Approved**



 **Glossy Black**

A wheel with a glossy black finish and a multi-spoke alloy design. A red circular icon with a white snowflake is positioned in the top-left corner of the wheel's frame.

 **Glossy Gold**

A wheel with a glossy gold finish and a multi-spoke alloy design. A red circular icon with a white snowflake is positioned in the top-left corner of the wheel's frame.

 **Vintage White**

A wheel with a vintage white finish and a multi-spoke alloy design. A red circular icon with a white snowflake is positioned in the top-left corner of the wheel's frame.

 **Matt Black**

A wheel with a matt black finish and a multi-spoke alloy design. A red circular icon with a white snowflake is positioned in the top-left corner of the wheel's frame.



FONDMETAL



INSPIRED COLLECTION



Wheel models dedicated to car brand enthusiasts, engineered and manufactured with the highest standard of quality and approved by ECE, KBA and NAD.

Fit & Drive wheels with specific hub center bore, factory hardware and OE center cap ready.



Modelli di ruote dedicati agli appassionati di marche automobilistiche, progettati e realizzati con i più alti standard di qualità e omologati ECE, KBA e NAD.

Ruote Fit & Drive con foro centrale del mozzo specifico, utilizzabili con accessori di serie e coppetta originale.



Die Radmodelle sind für Liebhaber von Automobilmarken. Sie wurden nach den höchsten Qualitätsstandards entwickelt und hergestellt. Sie sind nach der ECE, KBA und NAD Verordnung zugelassen.

Fit & Drive Räder mit Mittelloch der spezifischen Nabe, sind mit Serienzubehör und Original-Kappe lieferbar.

Inspired

VOLCAN **NEW**



Discover the
new **VOLCAN**

 **Winter Approved**

 **OE Cap Compatibility**
Land Rover



INSPIRED COLLECTION

 **SIZES**

9.5 x 22"
9.5 x 23"



Glossy Black



Glossy Black Machined

Inspired

ZEPHYRUS



8.5 x 19"
9.0 x 20"



Matt Black Machined



Glossy Black



Glossy White



INSPIRED COLLECTION



Inspired

TARANIS



SIZES

8.0	x	18"
8.0 / 9.0	x	19"
8.5 / 9.5	x	20"



Matt Black Machined Lip



Glossy Black

 **Winter Approved**

 **OE Cap Compatibility
Mercedes-Benz**



INSPIRED COLLECTION



Inspired

TAARA



SIZES

8.0 / 8.5	x	19"
9.0	x	20"
8.5 / 9.5	x	21"
10.0	x	22"



Winter Approved

OE Cap Compatibility
VW/Audi Group



INSPIRED COLLECTION



Inspired

ZELOS



 **SIZES**

8.5 / 9.0 / 10.0 / 10.5 x 20"
9.5 / 11.0 x 21"



Glossy Black



Matt Gold



 **Winter Approved**

 **OE Cap Compatibility Porsche**



INSPIRED COLLECTION



Inspired

IUPITER



SIZES

8.0 x 18"
8.0 / 8.5 / 9.0 x 19"



Glossy Black



Matt Gold

Winter Approved

OE Cap Compatibility
BMW



INSPIRED COLLECTION



Inspired

KARI



SIZES

8.0	x	18"
8.0 / 9.0	x	19"
8.5 / 9.5	x	20"
9.0 / 10.0	x	21"



Winter Approved

OE Cap Compatibility Mercedes-Benz



INSPIRED COLLECTION



Inspired

ELATHA



SIZES

8.0	x	18"
8.5	x	19"
9.0	x	20"
8.5 / 9.5	x	21"



Glossy Black Bronze Machined



Glossy Black Machined



Glossy Black

Winter Approved

OE Cap Compatibility
VW/Audi Group



INSPIRED COLLECTION



Inspired

E-JOULE



SIZES

7.5 / 8.0 / 8.5 / 9.5	x	19"
7.5 / 8.0 / 8.5 / 9.0 / 9.5	x	20"
8.5 / 9.0 / 9.5	x	21"



Winter Approved **OE Cap Compatibility Tesla**



INSPIRED COLLECTION



Inspired

CRATOS



9.5 / 11.0 x 21"
10.0 / 11.5 x 22"



Glossy Black Machined



Glossy Black



Matt Braun



INSPIRED COLLECTION



Inspired

THOE



SIZES

8.0	x	18"
8.0 / 9.0	x	19"
8.0 / 9.0	x	20"



 **Winter Approved**

 **OE Cap Compatibility
BMW**



INSPIRED COLLECTION



Inspired

ISTAR



 **SIZES**

9.0 x 20"
9.0 x 22"



Glossy Black



Matt Braun

 **Winter Approved**

 **OE Cap Compatibility
Land Rover Defender**



INSPIRED COLLECTION



Inspired

MOROS



SIZES

9.5 x 20"



Matt Black Machined Lip



Matt Black

 Winter Approved

 OE Cap Compatibility
Mercedes-Benz G-Class



INSPIRED COLLECTION



Inspired

ATENA



SIZES

8.0	x	18"
8.0 / 8.5	x	19"
8.5 / 9.0	x	20"
9.0 / 10.0	x	21"
10.0	x	22"



 Winter Approved

 OE Cap Compatibility
VW/Audi Group



INSPIRED COLLECTION



Inspired

KOROS



SIZES

	6.5	x	16"
	6.5 / 7.0 / 7.5	x	17"
	6.5 / 7.0 / 7.5 / 8.0	x	18"
	7.5 / 8.0 / 8.5 / 9.0 / 9.5	x	19"



Winter Approved



INSPIRED COLLECTION



Inspired

MAKHAI



SIZES

8.5	x	19"
9.0	x	20"
9.0 / 10.0 / 11.0	x	21"



Glossy Black Machined



Glossy Black

Winter Approved

OE Cap Compatibility
Audi/Porsche



INSPIRED COLLECTION



Inspired

AIDON



SIZES

8.0	x	18"
8.0 / 9.0	x	19"
8.5 / 9.5	x	20"



Winter Approved

OE Cap Compatibility Mercedes-Benz



INSPIRED COLLECTION



Inspired

IOKE



 **SIZES**

8.0 x 18"



Matt Black Machined



Glossy Black

 **Winter Approved**

 **OE Cap Compatibility
Mercedes-Benz**



INSPIRED COLLECTION



Inspired

ALKE

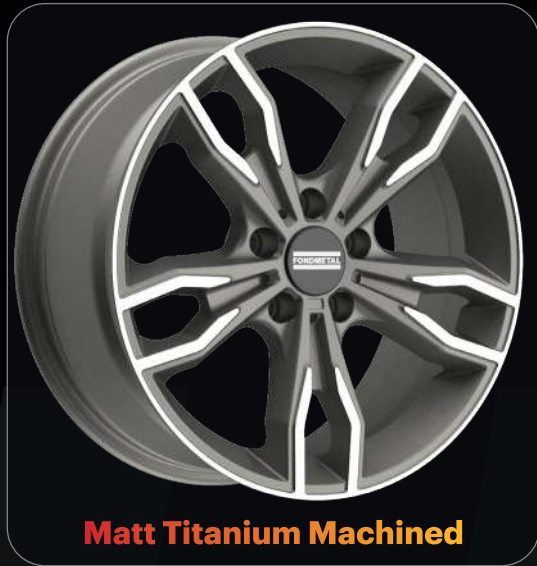


SIZES

8.0 x 18"
8.5 / 9.5 x 20"



Glossy Black Machined



Matt Titanium Machined

Winter Approved

OE Cap Compatibility
BMW



INSPIRED COLLECTION



Inspired

HEXIS



8.0 x 18"



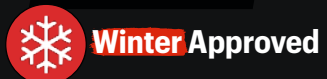
Glossy Black Machined



Glossy Titanium Machined



Glossy Black



Winter Approved



OE Cap Compatibility
VW/Audi Group



INSPIRED COLLECTION







FOR OFF-ROAD

BLISTER

DESIGNED FOR OFF-ROAD



OFF-ROAD COLLECTION



The beginning of a limitless adventure: Bluster is ready to rule any terrain.

Get ready for an ultimate riding experience with our first off-road wheel.



L'inizio di un'avventura senza limiti: Bluster è pronta a dominare qualsiasi terreno.

Preparati a vivere un'esperienza di guida senza precedenti con la nostra prima ruota off-road.



Der Beginn eines Abenteuers ohne Grenzen: Bluster ist bereit, jedes Terrain zu beherrschen.

Machen Sie sich bereit für ein noch nie dagewesenes Fahrerlebnis mit unserem ersten Offroad-Rad.

OFF-ROAD

BLUSTER

Especially designed
for **EVERY TERRAIN** experiences!



OFF-ROAD COLLECTION





STYLE YOUR
WHEELS IN **3D**



SIZES

8.5 X 17"
8.0 X 18"
9.0 X 20"



Winter Approved



MATT BLACK

MATT BLACK MACHINED LIP

MATT BRAUN BLACK LIP





CLASSIC COLLECTION

Group4wheels



“Fondmetal Goes Classic”-our exclusive range of alloy wheels for classic Porsches (1964-1989) and early air-cooled Volkswagen models.

Authentic design meets modern engineering, in collaboration with Group4Wheels.



“Fondmetal Goes Classic” – la nostra esclusiva gamma di cerchi in lega per Porsche classiche (1964-1989) e per i primi modelli Volkswagen raffreddati ad aria.

Il design autentico incontra l'ingegneria moderna, in collaborazione con Group4Wheels.



“Fondmetal Goes Classic” - unser exklusives Angebot an Leichtmetallrädern für klassische Porsche (1964-1989) und frühe luftgekühlte Volkswagen Modelle.

Authentisches Design trifft auf moderne Technik, in Zusammenarbeit mit Group4Wheels.



 **SIZES**

5.0 / 6.0 X 15"

HF15

Matt Silver Machined Lip/Soft Matt Black/Matt Gold/Matt Titanium/Matt Silver

 **SIZES**

5.0 / 6.0 / 7.0 x 15"
6.0 / 7.0 / 8.0 / 9.0 x 16"

LMZ01

Soft Matt Black/Matt Gold/Matt Titanium/Matt Silver

Machined lip versions



PAG COLLECTION



6.0 X 15"

PAG 15

Soft Matt Black/Matt Gold/Matt Titanium/Matt Silver

7.0 / 8.0 / 9.0 x 16"

PAG 16

Soft Matt Black/Matt Gold/Matt Titanium/Matt Silver



8.0 / 9.0 / 10.0 x 17"

PAG 17

Soft Matt Black/Matt Gold/Matt Titanium/Matt Silver





SIZES

7.0 / 8.0 / 9.0 x 16"

STR16

Soft Matt Black/Matt Gold/Matt Titanium/Matt Silver



SIZES

7.0 / 8.0 / 9.0 x 16"

NOS16

Soft Matt Black/Matt Gold/Matt Titanium/Matt Silver





7.0 / 8.0 / 9.0 x 16"

RSR16

Soft Matt Black/Matt Gold/Matt Titanium/Matt Silver



5.0 / 5.5 / 6.0 / 7.0 x 15"

TT01

Matt Black/Matt Black No Clearcot/Matt Clearcot Gloss Machined





FONDMETAL



PROFESSIONAL COLLECTION



The models in the new Professional line are designed to handle heavy commercial vehicle loads efficiently and safely.

Two models, one with five holes and one with six, compose this new collection.



I modelli della nuova linea Professional sono progettati per gestire carichi pesanti dei veicoli commerciali in modo efficiente e sicuro.

Due modelli, uno a cinque fori e uno a sei compongono questa nuova collezione.



Die Modelle der neue Professional-Linie sind für den effizienten und sicheren Umgang mit schweren Nutzfahrzeugen ausgelegt.

Zwei Modelle, eines mit fünf und eines mit sechs Löchern, bilden die neue Kollektion, die einen Katalog für jeden Bedarf bereichern wird.

Professional

PRO1



PROFESSIONAL COLLECTION

Professional wheel with a **5-spokes** design.
Max load 1250 Kg.





Style your wheels in **30**



SIZES

6.5 x 16"
7.0 x 17"



Winter Approved



Glossy Black Machined



Glossy Black



Glossy Silver

Professional
PRO2



PROFESSIONAL COLLECTION

Professional wheel with a **6-spokes** design.
Max load 1250 Kg.





Style your wheels in **30**

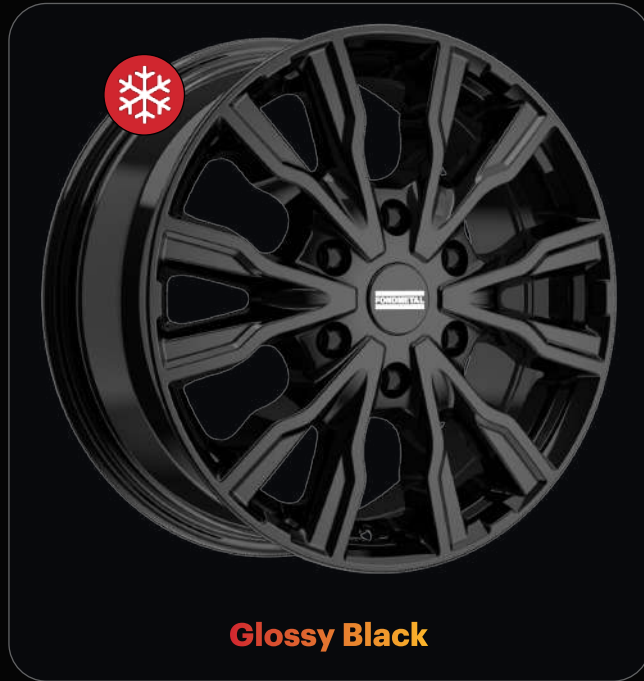


SIZES

6.5	x	16"
7.0	x	17"
7.5	x	18"



Winter Approved



MERCHANDISING & CLOTHING



PEN



MOUSE PAD



LANYARD



MUG



UMBRELLA



TRAVEL UMBRELLA



BAG



SHOPPING BAG



EXCLUSIVE T-SHIRT



EXCLUSIVE SWEATER



CAP



GILET



ESSENTIAL T-SHIRT



FLAG
85 x 250 cm
85 x 330 cm



WHEELS IRON DISPLAY
218 cm x 52 cm



WHEEL DISPLAY
130 x 90 cm
approximately



ROLL-UP 1972
85 x 200 cm



ROLL-UP 9 PERFORMANCE
85 x 200 cm

FORMULA SHOW WHEEL



F1 Show Wheel Rear 18" scale 1:1 color Glossy Black
F1 Show Wheel Front 18" scale 1:1 color Glossy Black

FORMULA POLE POSITION WHEEL



F1 Pole Position Wheel 9" scale 1:2 color Glossy Black

follow us



Facebook



Instagram

trademark disclaimer

FONDMETAL S.p.A. is in no way associated with any vehicle manufacturer or car brand. Any word, phrase or image that in any way resembles vehicle brand names or organizations is a registered trademark of the relevant car manufacturer.

The vehicle names and related terms, trademarks, brand names and the distinctive shapes of cars are recognized to be registered trademarks owned by the relevant manufacturers.

The content found on this catalogue is strictly for the purposes of showing the fitment options of **Fondmetal** products, not for the purpose of promoting or selling the vehicles depicted.



 **FONDMETAL**

© 2026 Fondmetal S.p.A. \ Via Bergamo, 4 - Palosco (BG) - Italy \ +39 035 845130 \ www.fondmetal.com